

6 May 2024 – 17 May 2024

# Branches and Roots: Tree Studies







**Exhibition  
Information**

3



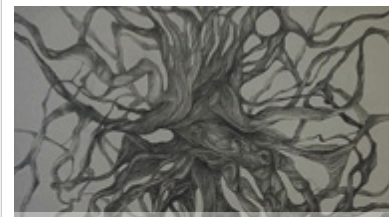
**Patricia Walsh:  
Dead Tree, Esopus  
Meadows**

4



**Tatiana Nikolova-  
Houston: Tree —  
Enlightenment**

5



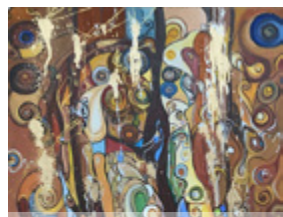
**Geanina M.  
Zaharia: Branches**

6



**Zaplaflora:  
Mystical Identity**

7



**Monacuba:  
A Strange Forest**

8



**Bogdan U.: Lake  
through Branches**

9



**Lesya Shulga:  
New Moon Energy**

10



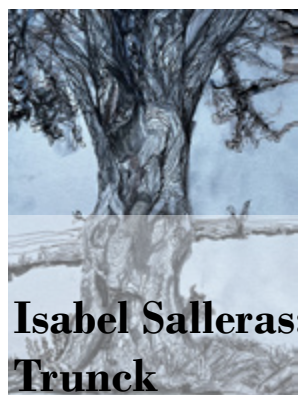
**Péter Szilágyi:  
Roots of Yggradsil**

11



**Tye Guy: His &  
Her Trees no. 2**

12



**Isabel Salleras:  
Trunk**

13



**Elena Zapassky:  
Desert Trees 3**

14



**Judith Skillman:  
Winter Trees**

15



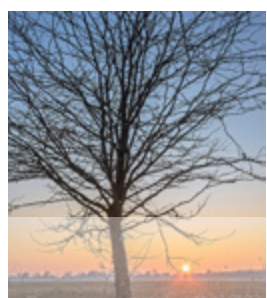
**Anna Dezső:  
Magnolia**

16



**Miss Margaret:  
Reading the Leaves**

17



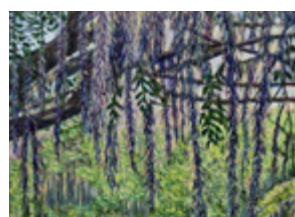
**Daniel Boca: The  
Tree at the Sunset**

18



**Nina Litvin:  
Tree of Times**

19



**Deserie Valloreo:  
Bridge and Spanish  
Moss**

20



**David Berger:  
Ascension of  
Humanity**

21



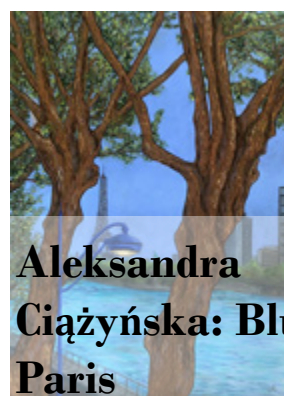
**SUE: Mepkin  
Serenity**

22



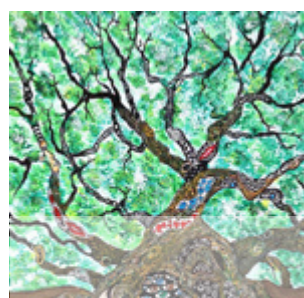
**Kathy Rivera:  
Barren**

23



**Aleksandra  
Ciężyńska: Blue  
Paris**

24



**Tessie Jayme: As  
Below — So Above**

25



**Alisteria: Branches  
of Malice**

26



**Curator's Note &  
Exhibition  
Results**

27



## Exhibition Information

The tree is a symbol often used in art, literature and religion, to illustrate the concept of interconnectivity between the sky and earth. An important element from nature, very often found in the art of all times, present in landscapes or studied in individual artworks, the tree is at some point the choice of every artist. With leaves, full of life, or empty, dry, the trees are represented in different settings depending on the season, in a realistic style or in interpretations with metaphorical references.

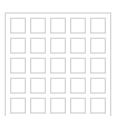
The symmetrical tree is a perfect construction, a perfect symbol of this endlessly repeating mathematical equation. Just like the human character, always ready to grow, the tree takes root and rises at the same time, finding in each curve of its branch the perfect image of the whole.

The roots and branches of the tree resemble the ramifications of lightning. Even the neurons of the human brain show branches very similar to the tree.

Maybe these lines already inspire you. Whether you want to paint landscapes with trees, or you want to do graphic studies, whether you will render something realistic or with philosophical references, show us what this theme makes you think about.

Curator: Cosmina M Oltean

Location: Online Exhibition

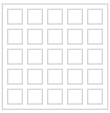


# Patricia Walsh: Dead Tree, Esopus Meadows



Art No: PP2366  
Artwork Dimensions:  
w: 22.86 cm (9 inches)  
h: 30.48 cm (12 inches)  
Year Created: 2023  
Medium: Watercolor  
Surface: Watercolor Paper

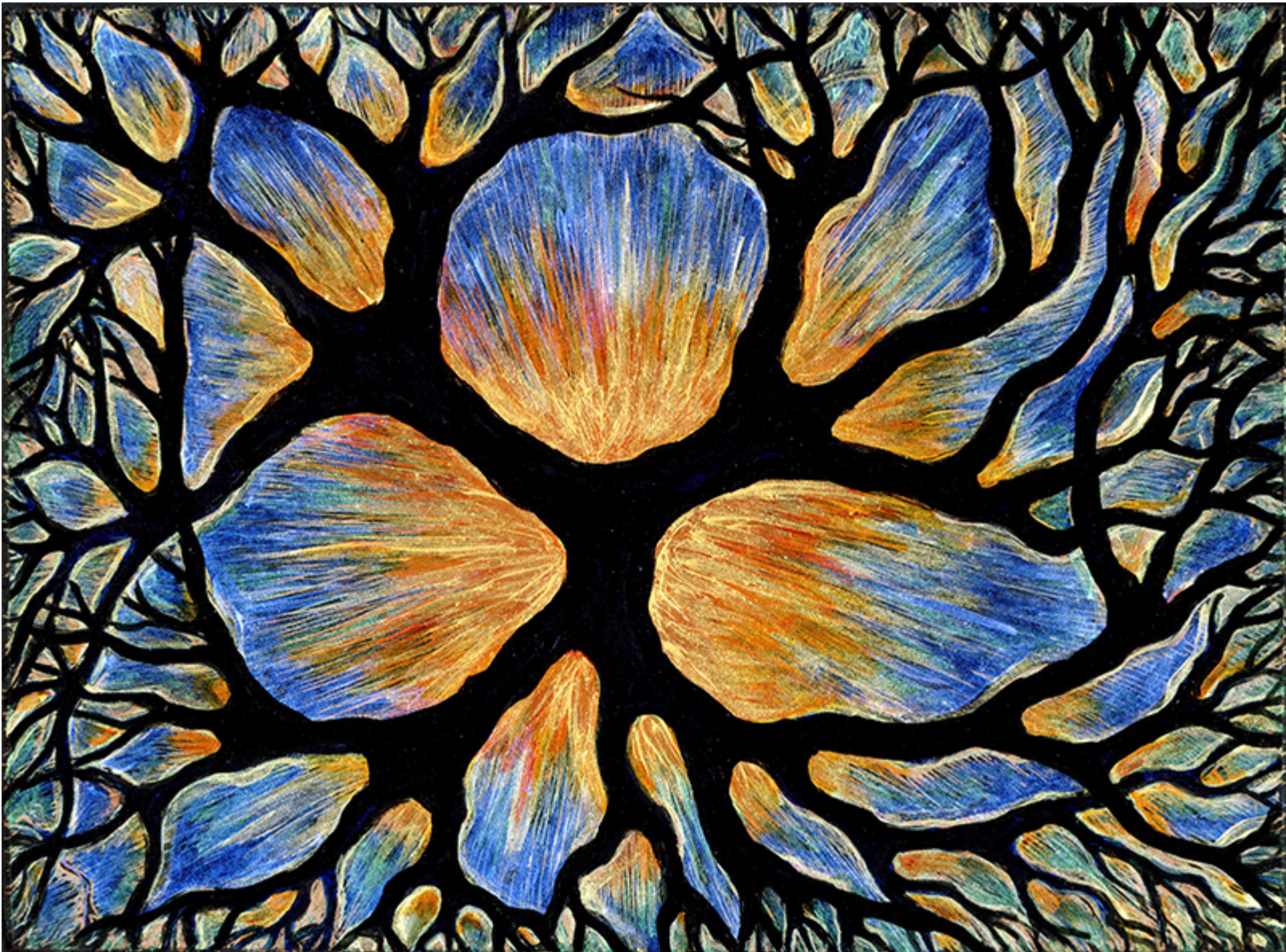
Branches and Roots: Tree Studies



Painting of a fallen dead tree in the waters of the Hudson River near Esopus Meadow Preserve.

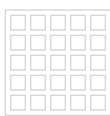


# Tatiana Nikolova-Houston: Tree – Enlightenment



Art No: PP2390  
Artwork Dimensions:  
w: 45.72 cm (18 inches)  
h: 35.56 cm (14 inches)  
Year Created: 2024  
Medium: Acrylic  
Surface: Cardboard

It is a little hard to know what the perspective here is. Is this tree with its spreading branches viewed from above or below? The Light comes from behind, as with the Burning Bush that Moses encountered. The medically inclined interpret it as neuron and synapses in the brain. The Light that spreads with the speed of light through the brain, the Light of thoughts, feelings, and mystical experience of the union with God — Theosis.



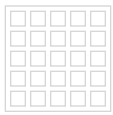


**Geanina M. Zaharia: Branches**



Art No: PP2377  
Artwork Dimensions:  
w: 83.82 cm (33 inches)  
h: 106.68 cm (42 inches)  
Year Created: 2018  
Medium: Pencil  
Surface: Canvas

Branches and Roots: Tree Studies





# Zaplaflora: Mystical Identity

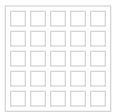


Popular  
Vote Award

Art No: PP2558  
Artwork Dimensions:  
w: 102 cm (40.8 inches)  
h: 76 cm (30.4 inches)  
Year Created: 2024  
Medium: Acrylic  
Surface: Canvas

My tree studies led me to women. The first challenge I encountered when I started working on this exhibition, was to find some issues that were novel and that, at the same time, were identified with the central theme of it. It seemed as if everything about trees had been already written since immemorial time. And from those first moments I began to enjoy this new challenge. Trees, forests, foliage, branches, roots, flowers and fruits... Bringing these concepts to my mind awakened my deepest emotions of respect and love for women. In this exciting journey through the world of pictorial creativity, I found myself mystically identifying these two primary sources of life: trees in Nature and women in Humanity, as the central thematic axis of my work. Then the mission was to project on the canvas those first shapes that would lead me to express in a painting that mystical identity. In my painting Trees and Women appear cohesive in the same image, but they are perfectly identifiable. I was not content still, and I tried to find further arguments. And that is how I found out that in the Jewish theology dating back more than 1500 years, there is a blessing with the title "Counsels from a Tree". Those tips are: enjoy the view; stand tall and proud; be content with your natural beauty; stop and smell the flowers; let others enjoy your shade; always remember your roots. Here I found again that mystical identity, because those advices could well be given by a mother to her offspring. And that is the story behind my painting "Mystical Identity", a tribute to Trees and Women, both sources of shelter, refuge and wisdom.

Branches and Roots: Tree Studies



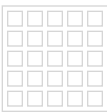


# Monacuba: A Strange Forest



Art No: PP2398  
Artwork Dimensions:  
w: 70 cm (28 inches)  
h: 50 cm (20 inches)  
Year Created: 2023  
Medium: Oil  
Surface: Canvas

Branches and Roots: Tree Studies



Nature is mysterious, and if a man in his pride thinks that he understands it, then perhaps he is mistaken

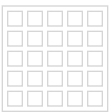


# Bogdan U.: Lake through Branches



Art No: PP2399  
Artwork Dimensions:  
w: 21 cm (8.4 inches)  
h: 30 cm (12 inches)  
Year Created: 2020  
Medium: Photography  
Surface: Other

Branches and Roots: Tree Studies



Red Lake through branches

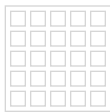


# Lesya Shulga: New Moon Energy



Art No: PP2435  
Artwork Dimensions:  
w: 29 cm (11.6 inches)  
h: 42 cm (16.8 inches)  
Year Created: 2023  
Medium: Watercolor  
Surface: Watercolor Paper

Branches and Roots: Tree Studies



Intuitive painting is a kind of art where you splash watercolours on paper and then look for images you see. This semi abstract artwork is a symbol of rebirth.



# Péter Szilágyi: Roots of Yggradsil



Honorable  
mention

Art No: PP2653  
Artwork Dimensions:  
w: 80 cm (32 inches)  
h: 60 cm (24 inches)  
Year Created: 2024  
Medium: Oil  
Surface: Canvas

Branches and Roots: Tree Studies



Although the tree of life, the Yggdrasil in Scandinavian mythology is an ash tree, the beech trees in the depths of the Bakony mountains also create a mythical effect with their sprawling roots that twist like huge snakes. I am always in awe when I walk among them.

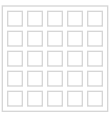


# Tye Guy: His & Her Trees no. 2



Art No: PP2474  
Artwork Dimensions:  
w: 76.2 cm (30 inches)  
h: 101.6 cm (40 inches)  
Year Created: 2023  
Medium: Other  
Surface: Canvas

Branches and Roots: Tree Studies



This a mixed media artwork with an off kilter look at a traditional landscape painting. It is oil, spray paint, charcoal , ink



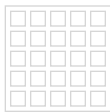
Isabel Salleras: Trunck



Art No: PP2545  
Artwork Dimensions:  
w: 22 cm (8.8 inches)  
h: 30 cm (12 inches)  
Year Created: 2023  
Medium: Pencil  
Surface: Paper

Cordoba Argentina old tree trunck

Branches and Roots: Tree Studies



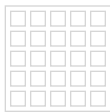


Elena Zapassky: Desert Trees 3



Art No: PP2549  
Artwork Dimensions:  
w: 30 cm (12 inches)  
h: 20 cm (8 inches)  
Year Created: 2024  
Medium: Photography  
Surface: Paper

Branches and Roots: Tree Studies





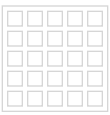
# Judith Skillman: Winter Trees



Honorable  
mention

Art No: PP2652  
Artwork Dimensions:  
w: 35.56 cm (14 inches)  
h: 27.94 cm (11 inches)  
Year Created: 2022  
Medium: Oil  
Surface: Canvas

Branches and Roots: Tree Studies



This painting is expressionistic and depicts shoreline of trees reflected in water using a limited palette. It is oil on canvas.

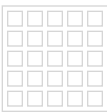


Anna Dezső: Magnolia



Art No: PP2553  
Artwork Dimensions:  
w: 70 cm (28 inches)  
h: 70 cm (28 inches)  
Year Created: 2024  
Medium: Acrylic  
Surface: Canvas

Branches and Roots: Tree Studies



The paint on my painting Magnolia has just filtered. Part 3 of my spring series.

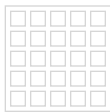


# Miss Margaret: Reading the Leaves



Art No: PP2537  
Artwork Dimensions:  
w: 27.94 cm (11 inches)  
h: 35.56 cm (14 inches)  
Year Created: 2022  
Medium: Other  
Surface: Paper

This is a painting of the leaves of trees that is more of a flurry of action, as if wind has driven it up into a fountain-like image or a pirouette. What the leaves are doing, and why they are doing it is left to the viewer to interpret.



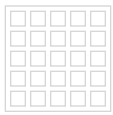


# Daniel Boca: The Tree at the Sunset



Art No: PP2556  
Artwork Dimensions:  
w: 30 cm ( 12 inches)  
h: 42 cm ( 16.8 inches)  
Year Created: 2024  
Medium: Photography  
Surface: Canvas

Branches and Roots: Tree Studies



This tree was photographed at sunset in january, in a cold winter day, after the snow, in the Mureş Floodplain Natural Park.



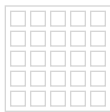
# Nina Litvin: Tree of Times



Art No: PP2654  
Artwork Dimensions:  
w: 50 cm (20 inches)  
h: 60 cm (24 inches)  
Year Created: 2024  
Medium: Oil  
Surface: Canvas

Branches and Roots: Tree Studies

“The Tree of Times before the Great Pyramids” is a canvas where history meets modernity, and myths intertwine with reality. This painting shows a mighty tree standing against the backdrop of a majestic pyramid. The tree symbolizes vitality, growth and endless development, and the pyramid is a reminder of the great past and the incomprehensible mysteries of ancient civilizations. The combination of these two elements on the canvas evokes deep reflections on time, eternity and the connection of generations.



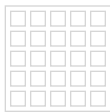


# Deserie Valloreo: Bridge and Spanish Moss



Art No: PP2376  
Artwork Dimensions:  
w: 40.64 cm (16 inches)  
h: 30.48 cm (12 inches)  
Year Created: 2023  
Medium: Acrylic  
Surface: Canvas

Branches and Roots: Tree Studies



Reflection of the bridge and tree line with Spanish Moss in the foreground at John Chestnut Sr park in Palm Harbor, FL.



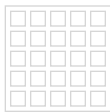
# David Berger: Ascension of Humanity



Art No: PP2576  
Artwork Dimensions:  
w: 76.2 cm (30 inches)  
h: 121.92 cm (48 inches)  
Year Created: 2023  
Medium: Oil  
Surface: Canvas

Ascension of Humanity is rich with symbolism. The Tree of Life is pregnant with possibilities and paths to take while living in the flesh. Our ultimate goal is to achieve a grounded enlightenment encased in our Earthly form. Sacred geometry equals the five elements. The white raven, from the Native American culture, symbolizes purification and “achievement” of our ultimate goal. The dolphins are the guardians of the sea and other realms. The rose is the pieces of our souls coming back together. The chrysalis and the egg indicate signs of metamorphosis. The colored “helix” represents the seven ordinary chakras or energy centers of the body. The texts are our Akashic records, the checkerboard; the game of life, and the reishi mushroom is a physical tool to assist in our transition. The mountains of Shambala in the clouds require no explanation.

Branches and Roots: Tree Studies



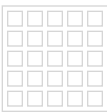


**SUE: Mepkin Serenity**



Art No: PP2579  
Artwork Dimensions:  
w: 50.8 cm (20 inches)  
h: 40.64 cm (16 inches)  
Year Created: 2020  
Medium: Watercolor  
Surface: Watercolor Paper

Branches and Roots: Tree Studies



An old live oak dripping with spanish moss reflecting in a pond.



# Kathy Rivera: Barren

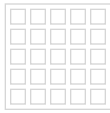


Curator's  
Award

Art No: PP2593  
Artwork Dimensions:  
w: 121.92 cm (48 inches)  
h: 91.44 cm (36 inches)  
Year Created: 2024  
Medium: Oil  
Surface: Canvas

The artwork is a painting that captures a serene, wintry landscape. It features a wide expanse of snow that blankets the ground, exhibiting soft shadows and gentle undulations indicative of its pliable nature. The snow extends toward a copse of trees, some of which stand leafless and dormant, clearly depicting the season's cold embrace. Amongst these trees, a few evergreens punctuate the scene, their dark foliage providing a stark contrast against the predominantly pale surroundings. The background is composed of more dense forestry, slightly obscured by what could be a mist or the blur of snowfall, lending depth and mystery to the composition. The color palette is restrained yet beautifully varied within the scope of wintry hues. Cool blues, whites, and muted greens dominate, with the occasional warmth of earth tones peeking through where the snow is thin. This delicate balance of color suggests a quiet chill and the stillness of a hushed natural world.

Branches and Roots: Tree Studies



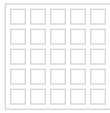


Aleksandra Ciążyńska: Blue Paris



Art No: PP2616  
Artwork Dimensions:  
w 50 cm (20 inches)  
h 70 cm (28 inches)  
Year Created: 2022  
Medium: Pastels  
Surface: Paper

Branches and Roots: Tree Studies





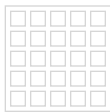
# Tessie Jayme: As Below — So Above



Art No: PP2621  
Artwork Dimensions:  
w 40.64 cm (16 inches)  
h 50.8 cm (20 inches)  
Year Created: 2024  
Medium: Acrylic  
Surface: Canvas

There’s nothing more magnificent than to see a tree standing alone on the crest of a hill. However, a closer look tells an even more magnificent story. A tiny seed enlivens and sends out tendrils of roots, which then seek sustenance from the very soil which supports it. That sustenance nourishes the seed, enough that it can manifest its essence through its genetic source, which will then determine the shape of its leaves, the height of its final growth, and an infinite variety of other factors which will determine its ultimate being. In fact, this process is the pattern which all living things follow to manifest their full potential. Thus, trees have become a symbol of the very essence which results in what humanity calls “LIFE”. From a fertilized male and female seed, a child is created, influenced by a multitude of genetic possibilities, feeding off the specific components of life experience, and encouraged by external energies of environment and lifestyle. A tree is indeed a magnificent thing.

Branches and Roots: Tree Studies



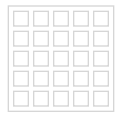


# Alisteria: Branches of Malice



Art No: PP2622  
Artwork Dimensions:  
w 21 cm (8.4 inches)  
h 29 cm (11.6 inches)  
Year Created: 2024  
Medium: Other  
Surface: Paper

Negative feelings engulf us all the time, and at times we become securely trapped by their firm grasp, so much so that what we're feeling and the security of holding on to those feelings become intertwined, just like the branches and roots of trees. "Branches of Malice" is a work that explores the intricate web of negative feelings which hold and weigh us down like twisted tree branches. Some people learn to let go of them, while others hold on to these feelings to the point of them becoming their family tree, their identity. The protagonist of this work is shown experiencing malicious feelings that surround her with every branch. Some didn't reach her yet, while others cover and obstruct her image.





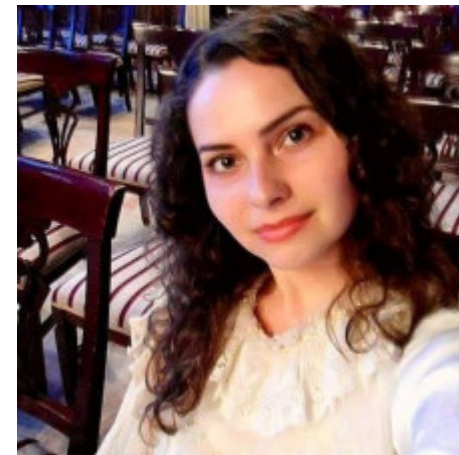
## Curator's Note

The exhibition turned out excellent and this is thanks to each of you! I am very happy for all the great artworks submitted in such a large number and of such high artistic quality. Each contribution was valuable. Congratulations to all!

I analyzed all artworks and it was difficult to choose only 20. In the end I chose 23. It is equally difficult to determine the prize because there are many good artworks that deserve it. I feel it as a great responsibility.

It has to be only one, so I choose to give the prize this time to Kathy Rivera for 'Barren', for the wonderful way in which it meets the requirements of the theme. Congratulations!

I invite you all to remain close to the gallery and to sign up for future exhibitions as well, because beyond any award, these are wonderful opportunities to join and meet international artists, learn from them, show your art to the world and celebrate art.



Cosmina M Oltean

## Exhibition Results

The winners of the contest are:

Curator's Award — "Barren" by Kathy Rivera

Gallery Award — "Tree of Times" by Nina Litvin

Popular Vote Award — "Mystical Identity" by Zaplaflora

Honorable Mention— "Winter Trees" by Judith Skillman

Honorable Mention— "Roots of Yggradsil" by Péter Szilágyi

